



STATES OF ALDERNEY

States Office, PO Box 1001, Alderney, Channel Islands GY9 3AA

BUILDING AND DEVELOPMENT CONTROL COMMITTEE

Planning Application no. PA/2020/005

Fraggle Rock, Windy Corner

Preliminary declaration application for the erection of 2 Two storey semi-detached houses (forming 4 separate dwellings) with off road parking and gardens

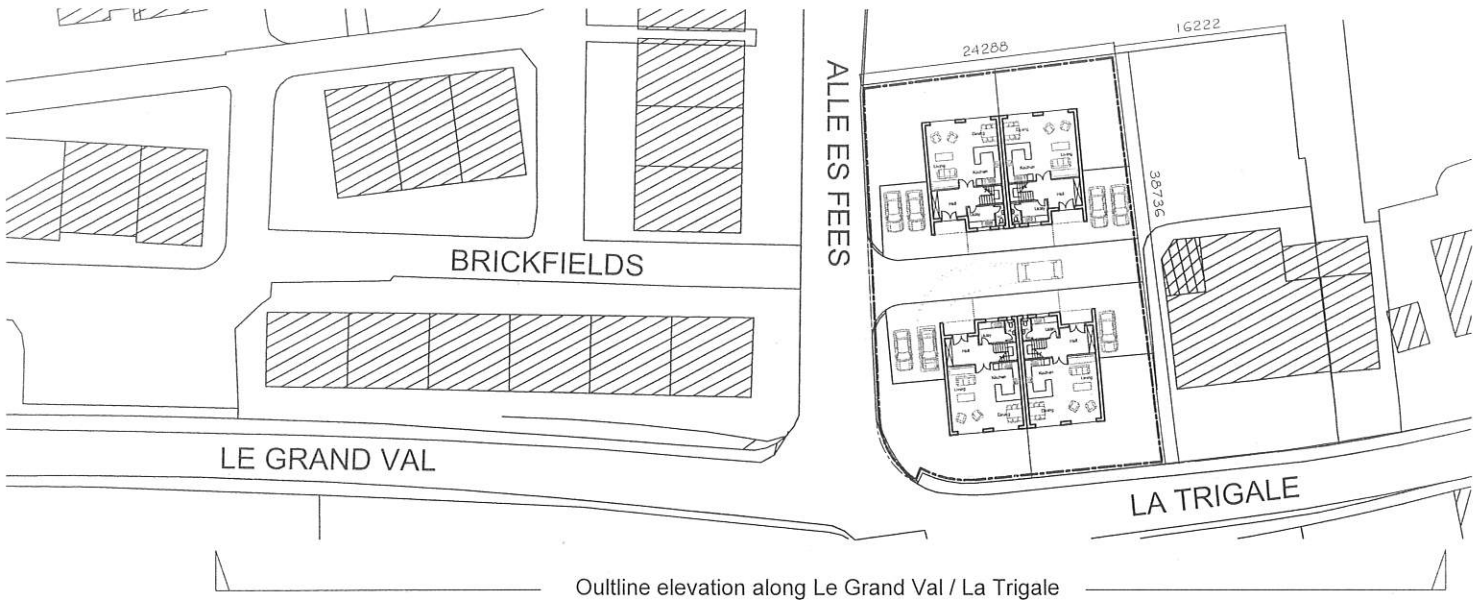
THE PLANS FOR THE ABOVE PROPOSAL ARE AVAILABLE TO VIEW IN THE STATES PLANNING OFFICE DURING NORMAL OPENING HOURS.

ANY PERSON WISHING TO MAKE REPRESENTATIONS REGARDING THE ABOVE PROPOSAL SHOULD SUBMIT THEM IN WRITING, OR BY EMAIL, TO THE PLANNING OFFICE, STATES OF ALDERNEY, BY:

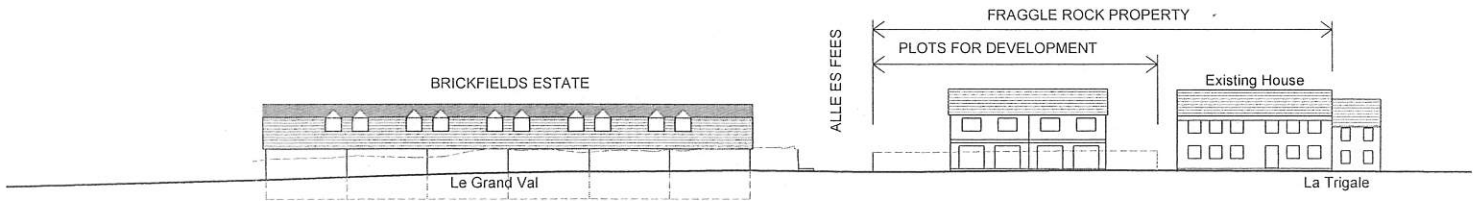
THUSRDAY 30 January 2020.

Tissie Roberts
Planning Officer
States of Alderney
PO Box 1001
Alderney GY9 3AA
Tissie.Roberts@gov.gg

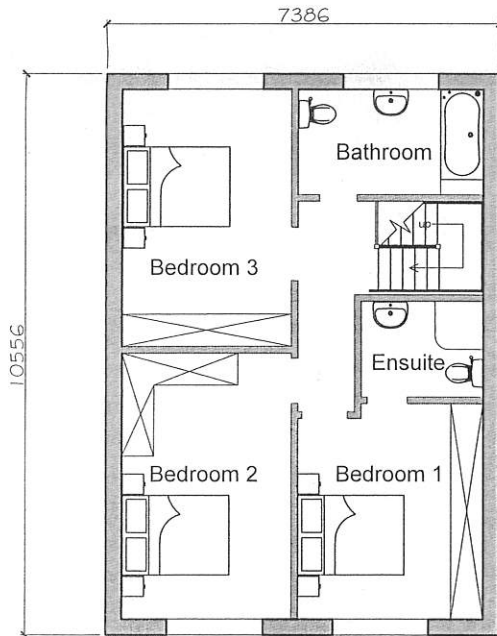
01481 820031



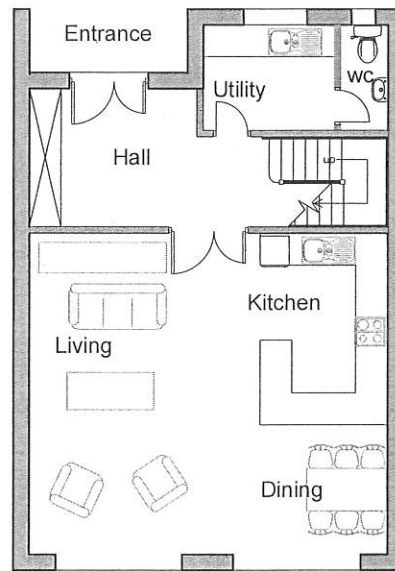
Outline elevation along Le Grand Val / La Trigale



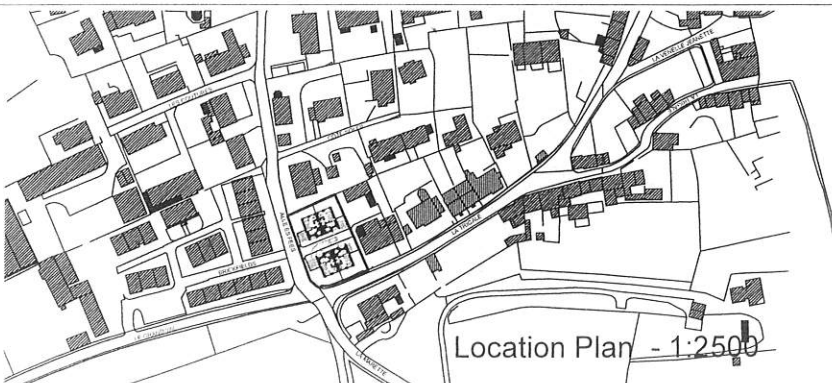
Outline elevation along Le Grand Val / La Trigale



1st. floor plan



2nd. floor plan



Location Plan - 1:2500

B.Pimm-Smith
Dip. Arch. (Copenhagen)
 Grosnez House
 52 Victoria Street, Alderney
 GY9 3YL
 Tel: 07781 408359
 Email: pimmsmith@cwgsy.net

PROJECT Fraggle Rock For Mr. & Mrs. Aireton		
DRAWING Preliminary Declaration		
DWG No.	SCALE	DRAWN DATE
FR-01	nts	BPS Jan2020